

Customer :

customer

Customer part :

customer part

Comment :

Comment

S1=4.77

S2=5.52

Tmax=468

Tp S2=507.0

PI=0.46

HI=76

Sample =1750.80

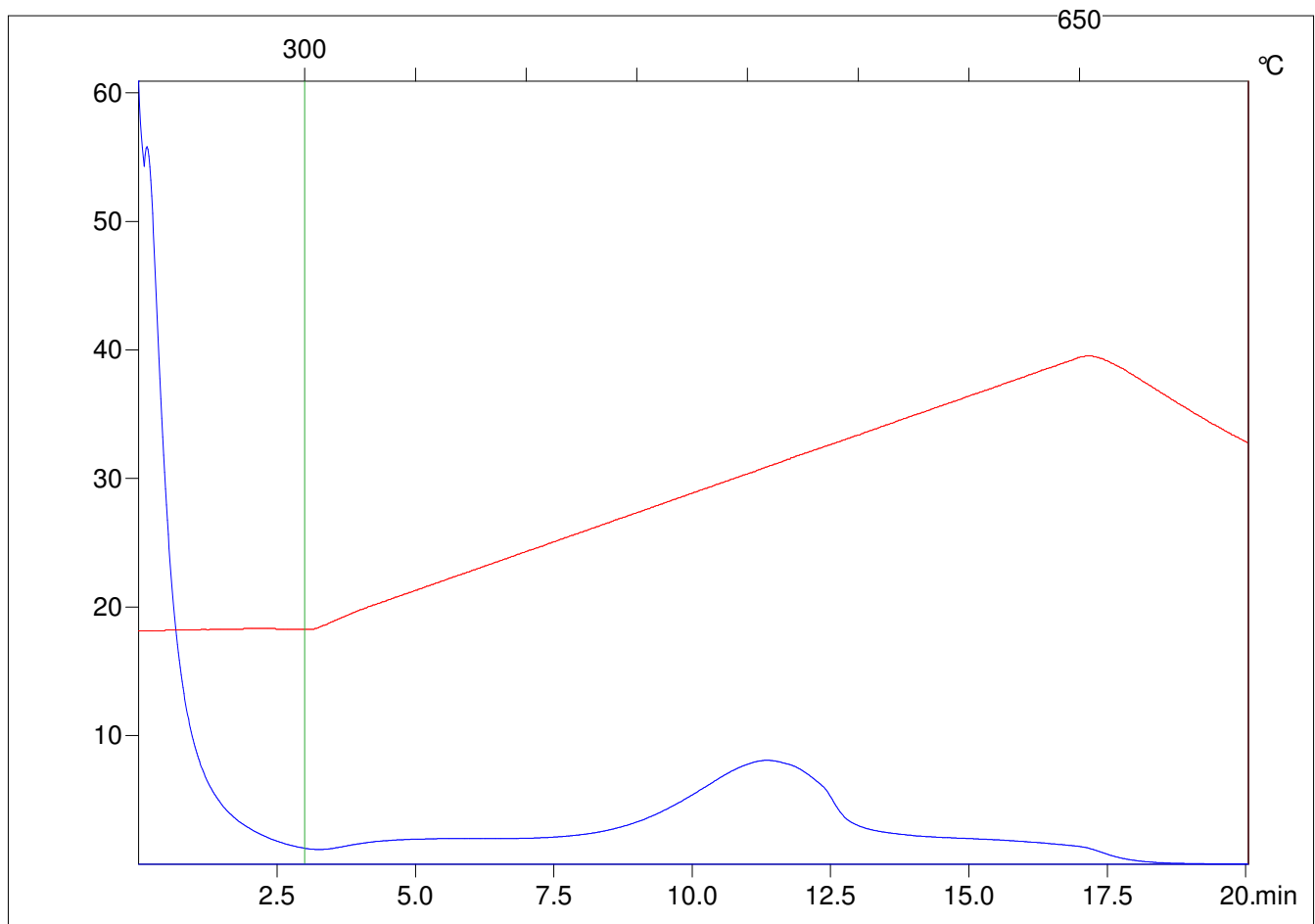
Method =Bulk Rock

Cycle=Basic

KFID(10*9)=1444

Qty =70.2

TOC=7.26



C:\VINC\PK2_1792\PK096.R00 : FID pyrolysis graphic

State

Pyro Status

Oxi Status